

가

02)3272-4684 | www.insuladd.co.kr

1.

가 가  
가 가 가  
가 가

가

, 가 ,

가 가

가

가

2.

가

30~100  
(Microscopic hollow)

가

가

가

가

Resistance)

200mm)

Resistance

R

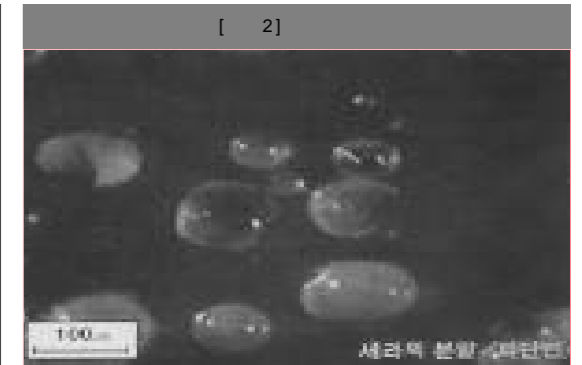
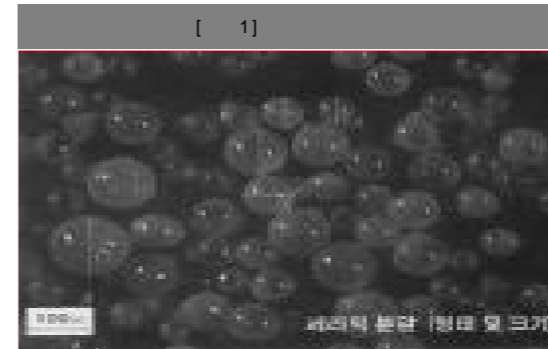
가

, R1

10mm

가

가



[ 1]

10,000

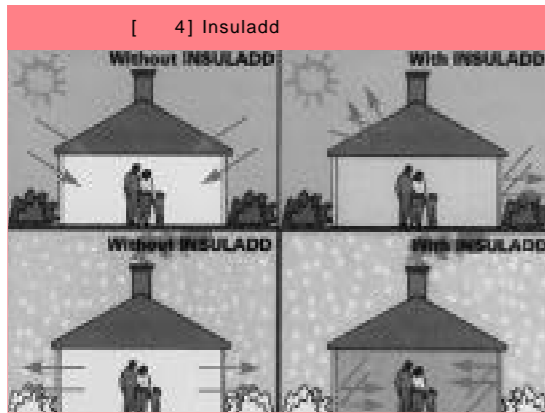
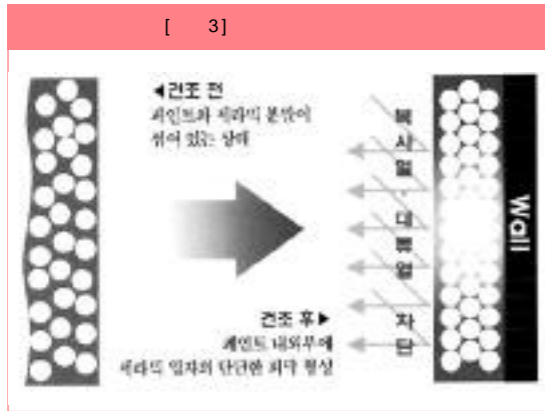
, [ 2]

[ 3]

가

[ 1]

[ 1]		
	가	
	56.7 lb/in2	ASTM D-882
	85%	ASTM D-865
	1,800C	NSTL( 가 )
	0.0755 (48Grains/m <sup>2</sup> hr)	ASTM D-1653
	A	UL790, ASTM E-108
K	0.017 W/m <sup>2</sup> ·K	ASTM C-177
	0.06 W/m <sup>2</sup> ·K @32F(0C)	
		ASTM D-1380
	4 12%	ASTM D-471
	: 90deg @ -37C	ASTM D-746
	: 70	ASTM D-1149
	0.017 W/m <sup>2</sup> ·K	ASTM C-177
	INSULADD 300 : 0.72Btu/hr sq.ft.	1.163Btu/hr.sq.ft.
	Min. 85%	ASTM E903-82
R	20	NSTL( 가 )
	95%( )	
	300ft/gal.(203 microns)	
	2	
	2	
		ASTM G-21



3.

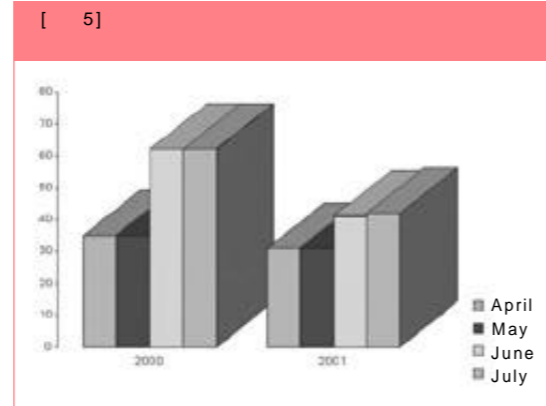
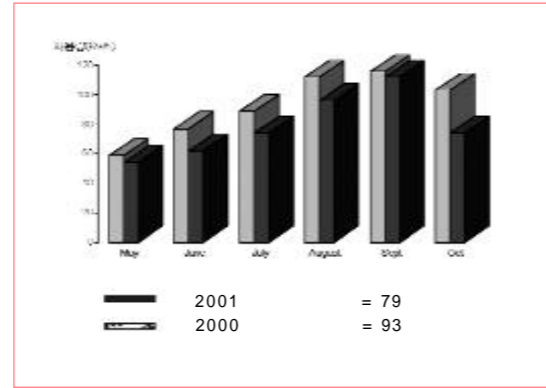
6			
	2000	2001	(Kwh/ )
5	59	54	-5 Kwh/
6	77	62	-15 Kwh/
7	89	74	-15 Kwh/
8	112	96	-16 Kwh/
9	116	112	-4 Kwh/
10	103	74	-29 Kwh/
	92.66	78.66	-14.00 Kwh/

1. 2

2. 6

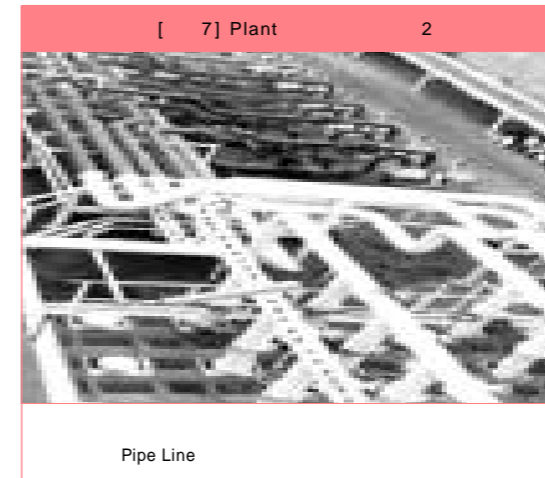
3. 6 : 2,518Kwh

4. 가



4.

가  
KS M 3510  
89%



가 (Mean Radiation Temperature)가

,가  
가  
가

2

가

VOC

가

가

가 1,650

가

가

가

가.

가

가